

CATEGORY	DESCRIPTION	P/N #
CONNECTOR	RCA JACK+Toslink	RT009R-411X0-XX0X

REV.	ECN NO	DESCRIPTION	REVISED	DATE
R01		NEW RELEASE	JackLiu	2010.12.23

RT009R-411X0-XX0X

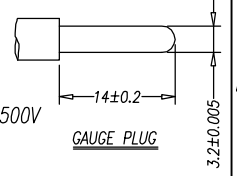
0	表示不带光纖
T	表示光纖為發射

Color Scheme
Material & Plating

TABLE 1	X OUTER CONTACT PLATING	TERMINAL PLATING	SHIELDING PLATING	WASHER MATERIAL
B	CuSn Plating	CuSn Plating	CuSn Plating	
Y	Gold flash Plating	CuSn Plating	Gold flash Plating	ABS UL94-HB
9	Gold flash Plating	Gold flash Plating	CuSn Plating	
7	CuSn Plating	CuSn Plating	CuSn Plating	
1	Gold flash Plating	CuSn Plating	CuSn Plating	PBT UL94V-0

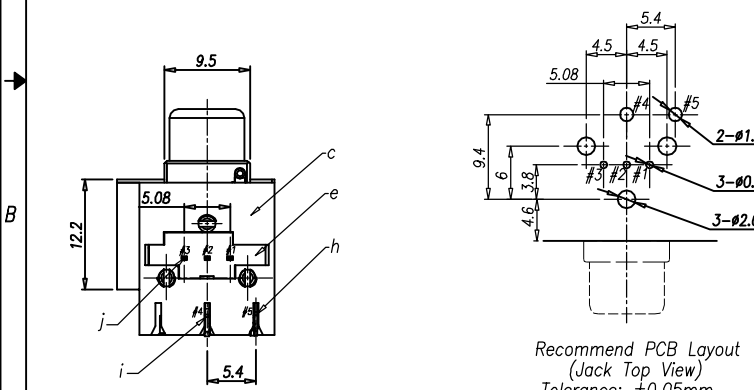
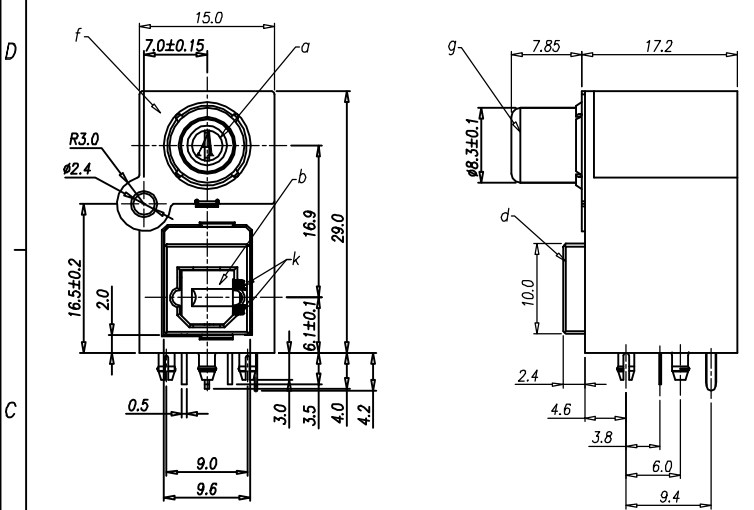
RCA SPECIFICATION

1. Voltage and Current Rating: 12V & 1A
2. Contact resistance: 30mΩ MAX
3. Insulation resistance: 100MΩ MIN @ DC500V
4. Withstand voltage: 500VAC for 1min
5. Insertion Force: 3Kgf MAX
6. Extraction Force: 0.3Kgf MIN
7. Withdraw Force for Center Contact: 0.08Kgf MIN
(Use a OD=3.2 ± 0.005mm, Length=14 ± 0.2mm Gauge Plug)
8. Terminal Strength: The terminal shall be capable of withstanding a force of 3Kgf applied in any direction for 0.5 secs without lossing and breakdown
9. Life test: 1,500 cycles
10. Temperature Range: -25°C~70°C
11. To conform with the "QC-03-045" & "RoHS DIRECTIVE"
12. Solder heat resistance: wave soldering 260°C 5 secs

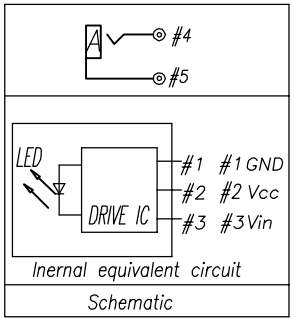


GQ SPECIFICATION

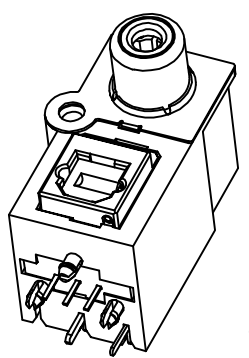
1. Voltage Rating: Vcc=0.5~7V, Vin=-0.5~7.5V
2. Current Rating: 25mA
3. Insulation resistance: 100MΩ Min.
4. Withstand voltage: AC3.5KV (50HZ) for 1min
5. Insertion Force: 2.5Kgf Max.
6. Extraction Force: 0.5Kgf Min.
7. Life test: 1,500 cycles
8. Temperature Range: -20°C~70°C
9. To conform with the "QC-03-045" & "RoHS DIRECTIVE"
10. Solder heat resistance: wave soldering 260°C 5 seconds



Recommend PCB Layout (Jack Top View)
Tolerance: ±0.05mm
Recommend PCB Thickness: 1.6mm



k	SPRING	1	STEEL		
j	ODL	1	16Mbps		
i	TERMINAL #4	1	BRASS T=0.5mm	SEE TABLE 1	
h	TERMINAL #5	1	BRASS T=0.3mm	SEE TABLE 1	
g	OUTER CONTACT	1	BRASS T=0.4mm	SEE TABLE 1	
f	SHIELDING	1	BRASS T=0.3mm	SEE TABLE 1	
e	COVER	1	PBT UL94V-0	BLACK	
d	FRAME	1	PA66 UL94V-0	BLACK	
c	HOUSING	1	PBT UL94V-0	BLACK	
b	GATE	1	PA66 UL94V-0	SEE COLOR SCHEME	
a	WASHER	1	SEE TABLE 1	SEE COLOR SCHEME	
NO.	PART NAME	Q'TY	MATERIAL	PLATING & COLOR	REMARK



3D VIEW

Color Scheme

XX	WASHER	GATE
00	BLACK	BLACK
01	ORANGE	BLACK
03	ORANGE	ORANGE
08	ORANGE	GREY
15	ORANGE	LIME (#577C)

Product Drawing
ALEXTRONIC

UNLESS OTHERWISE SPECIFIED TOLERANCES		SCALE: 1/1	UNIT: mm	DWG. NO: WI-061-1004
		SIZE: A3	PAGE: 1 OF 1	REV: R01
DECIMALS:	ANGLES:	APPROVED BY	CHECKED BY	PREPARED BY
X : ±0.5	X : ±2°			
X.X : ±0.3	X.X : ±1°			
X.XX : ±0.2				
CUSTOMER COPY				